

GRAND DESIGNS AUSTRALIA

**LET'S
RENOVATE**
TURN YOUR DREAM
INTO A REALITY

**SMART
HOMES**
WELCOME TO
THE FUTURE

65

PAGES OF
INTERIOR &
ARCHITECTURAL
INSPIRATION

How the challenges
facing the construction
industry affect you

UNIVERSAL
MEDIACO

Issue 12.3

AUS\$11.50*

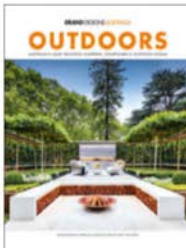
NZ\$12.99 (Incl. GST)



ART IN MOTION

A Federation-style house with a modern rear addition

CREDITS



GRAND DESIGNS AUSTRALIA

UNIVERSAL MEDIACO

EDITOR April Ossington
DEPUTY EDITOR Louise Smithers
CONTRIBUTORS Peter Colquhoun, Chris Knierim, Carrol Baker
DESIGNER Kate Podger
PLANS Anthony Allars

COVER IMAGE
 Zig Zag House by Stukel Architecture and AJP Constructions
 Photography by Simon Whitbread

ADVERTISING ENQUIRIES AND BOOKINGS NSW

Advertising Team Leader
 Anthea Hamilton
 M: 0414 319 271
 E: ahamilton@umco.com.au
Business Development Partnerships Manager
 David Strong
 M: 0411 424 072
 E: dstrong@umco.com.au
Vic, SA, Tas, Qld Advertising Manager
 Natalie Grosso
 M: 0420 477 422
 E: ngrosso@umco.com.au
Vic Kitchens, Bathrooms & Heating Specialist
 John Oliver
 P: (03) 9694 6430 M: 0417 316 820
 E: joliver@umco.com.au

Advertising Production
 Brendan Alder

Chairman/CEO
 Prema Perera
Publisher
 Janice Williams
Chief Financial Officer
 Vicky Mahadeva
Associate Publisher
 Emma Perera
Circulation Business Development Manager
 Mark McTaggart

This magazine is printed on paper produced in a mill that meets Environmental Management System ISO14001. Grand Designs Australia issue 12.2 is published by Universal Magazines, Unit 5, 6-8 Byfield Street, North Ryde NSW 2113. Phone: (02) 9805 0399, Fax: (02) 9805 0714, Melbourne office, Level 1, 150 Albert Street, South Melbourne Vic 3205. Phone: (03) 9694 6444, Fax: (03) 9699 7890. Printed in Singapore by Times Printers, timesprinters.com. Retail distribution: Gordon and Gotch, Australia. Distributed in Singapore and Malaysia by CARKIT (FE), Singapore, Phone: 65 62821 960. This book is copyright. Apart from any fair dealing for the purpose of private study, research, criticism or review as permitted under the Copyright Act, no part may be reproduced by any process without written permission. Enquiries should be addressed to the publishers. The publishers believe all the information supplied in this book to be correct at the time of printing. They are not, however, in a position to make a guarantee to this effect and accept no liability in the event of any information proving inaccurate. Prices, addresses and phone numbers were, after investigation, and to the best of our knowledge and belief, up to date at the time of printing, but the shifting sands of time may change them in some cases. It is not possible for the publishers to ensure that advertisements which appear in this publication comply with the Competition and Consumer Act 2010 (Cth) and the Australian Consumer Law. The responsibility must therefore be on the person, company or advertising agency submitting the advertisements for publication. While every endeavour has been made to ensure complete accuracy, the publishers cannot be held responsible for any errors or omissions.
 * Recommended retail price
 ISSN 2200 - 2197
 Copyright © Universal Magazines MMXXIII
 ACN 003 026 944
 umco.com.au
 Please pass on or recycle this magazine.

Fremantle

Grand Designs® is a trademark of, and is licensed by, FremantleMedia Australia. All rights reserved. Grand Designs® is produced by FremantleMedia Australia Pty Ltd. ©2023 FremantleMedia Australia Pty Ltd. Licensed by FremantleMedia Australia. All rights reserved.

Houses

The cream of the crop
in Australian architecture

76 The Bromley **90** Zig Zag House
102 Wyuna **112** Victoria House
128 Hideaway House
142 Queens Park House
154 AB House



Photography Simon Whitbread



Art in motion

The ebb and flow of a once-upon-a-time waterway was the inspiration for this dynamic home that defies convention in so many clever ways

WORDS CARROL BAKER **PHOTOGRAPHY** SIMON WHITBREAD



PROJECT
ZIG ZAG HOUSE

From the street, this home is a very different offering to what you discover at the rear



DETAILS

HOUSE Zig Zag House
LOCATION Kensington, NSW
INITIAL BUDGET \$1 million
FINAL COST \$1.6 million
DATE COMMENCED September 2018
DATE COMPLETED July 2021

a concertina pleated roofline and playful “jetty” extending into the rear yard are among many of the striking features woven into the fabric of this remarkable home.

The existing Federation-style house, with a rear addition, stood among its contemporaries in the tree-lined suburban street. Daniel Stukel Beasley, director of Stukel Architecture, says the homeowners sought an adventurous and daring design that would make a big visual impact. “They wanted something that was bold and atypical to the other surrounding cottages in the neighbourhood while retaining the original house,” says Daniel.

The homeowners wanted a home for retirement and had a clear vision of what they were after: open-plan living spaces, a seamless connection to the outdoors, and a ceiling that was a showstopper. “The team worked hard to conceptualise and deliver an exceptional result,” says Daniel. Indeed, it is a design triumph, with a soaring ceiling and captivating shapes to ponder.

The striking and bespoke
roofline is a talking point



“THEY WANTED SOMETHING THAT
WAS BOLD AND ATYPICAL TO THE
OTHER SURROUNDING COTTAGES
IN THE NEIGHBOURHOOD WHILE
RETAINING THE ORIGINAL HOUSE”
— DANIEL STUKEL BEASLY



**EDITOR'S
FAVOURITE**

THE STRIKING CONCERTINA
OVERHANG TO THE REAR
THAT TAKES THE DESIGN
FROM INSIDE TO OUT

Natural light filters
through the vast high
and low glazing



The home boasts living spaces that invite you to linger



The existing rear extension was removed and a large open-plan kitchen, living and dining space was created, along with a powder room, integrated with an internal laundry. The first floor is made up of three bedrooms that include an ensuite, dressing room, main bathroom and study. A grand staircase with a commanding presence connects the old and new parts of the home and is a focal point.

One of the most ambitious aspects was the roofline. There was much to consider in terms of design, structural elements, and then delivering the final vision in built form. "This was achieved by slicing up the 3D model to prepare computer numeric controlled (CNC) cut plywood ribs, to guide the ceiling tracks and ultimately the ceiling lining," explains Daniel.

"Materials and construction methods were pushed to their limits, with the lining requiring a subtle twist."

The interiors are handsome; a mixture of materials have created interesting forms and many are used in surprising ways, taking ordinary materials and putting them to extraordinary use. One example was the use of conventional plasterboard. "By taping and setting it, we created an unrecognisable homogenous sculptural surface," enthuses Daniel. "This gives the materiality of the ceiling and roof a puzzling ambiguity."

Other feature materials include crown-cut oak timber veneer in the staircase handrail and kitchen cabinetry, and the Oregon concrete walling in which you see different grain patterns of the timber. The project pays testament to exceptional craftsmanship and

good design in so many ways.

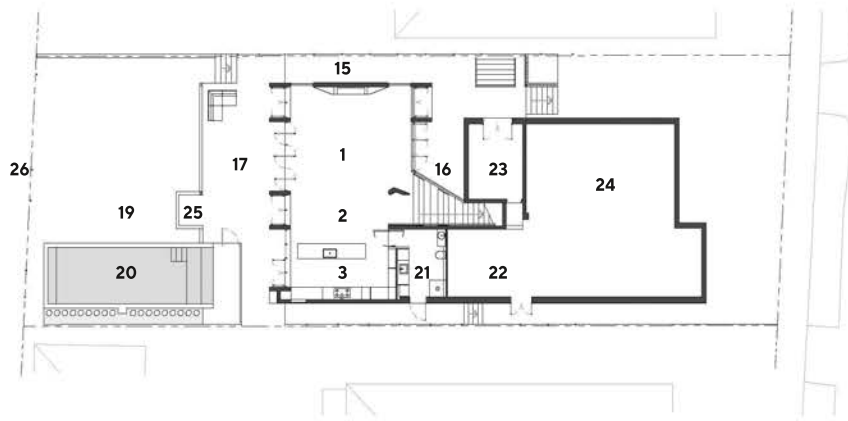
With the home's orientation to the west, providing protection was key. This was addressed with deep overhangs, concealed roller blinds and shading from the sculptural pergola. It is well insulated, with ample opportunities for cooling breezes to flow through. Passive heating to the floor slab is augmented by hydronic heating in the cooler months. Solar panels and a rainwater tank have also been fitted.

Daniel says that for him, a standout in the project is the use of the blade column as a device to divide the circulation down the central staircase. "It stands as an engaging character in the centre of the space, inviting the occupants to brush by either side, tracing their hand along the sinuous surface," he shares. 🏡

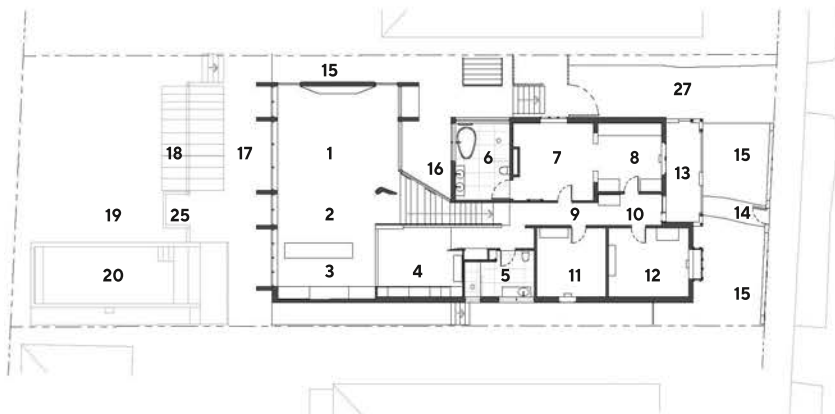
A dark colour scheme in the kitchen adds to the dramatic feel of the space



PROJECT
ZIG ZAG HOUSE



LOWER FLOOR PLAN



UPPER FLOOR PLAN

LEGEND

- 1 Living
- 2 Dining
- 3 Kitchen
- 4 Study
- 5 Bathroom
- 6 Ensuite
- 7 Bedroom
- 8 Dressing room
- 9 Hall
- 10 Entry
- 11 Guest bedroom
- 12 Study
- 13 Patio
- 14 Path
- 15 Garden
- 16 Courtyard
- 17 Terrace
- 18 Pergola
- 19 Lawn
- 20 Pool
- 21 Laundry
- 22 Equipment
- 23 Storage
- 24 Underfloor
- 25 Jetty
- 26 Culvert
- 27 Parking



This home is a shining example of planning, innovation and attention to detail



PROJECT TEAM

ARCHITECT, DESIGNER AND INTERIOR DESIGNER Stukel

Architecture, stukel.com.au

BUILDER AJP Constructions, ajpconstructions.com.au



WE LOVE
THE LEAFY SHOWER WALL
THAT SOFTENS THE SPACE
BY INVITING IN NATURE

Generous proportions throughout add to the feeling of defined luxury

STRUCTURAL TEAM

Cladding Corten Australia

Cladding HVG Facades

Roof supplier Lysaght

Soffits and eaves CSR

SERVICES

Venetian plaster Venetian Plaster NSW

Hydronic floor heating

Comfort Heat

Switches Hager

Air conditioning Daikin

Gas fireplace Stoke

Fireplaces

Colour consultant Lick

Colour

Pool contractor supplier

Senator Pools

Soft landscape designer

Adam Robinson Design

FIXTURES & FITTINGS

Lighting Fos Lighting

Lights lilus

Tiles Di Lorenzo Tiles

Stone benchtop SNB Stone

Joinery broker Improva

Joinery contractor Interex

Tile splashbacks Cosentino

External blinds Verosol

External heaters Bromic

Kitchen appliances

Winnings

Wet area fixtures Sydney

Taps

Kitchen stainless-steel

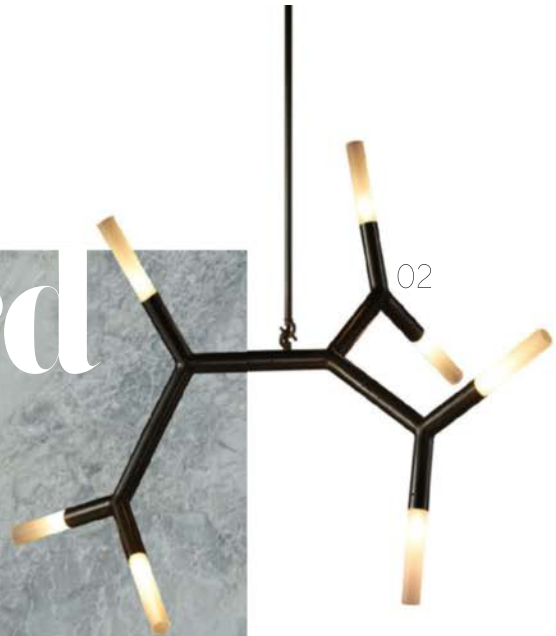
surround Rimex Metals

Mood Board



Colour Palette

A dramatic moody palette of greys and blacks, interspersed with pops of white to lift the spaces. Organic materials, with rich textural elements. A dynamic bespoke design with brown tones and some green accents



01/ Porcelain Silverdrop. caesarstone.com.au

02/ Christopher Boots BCAA 7 arm light fitting. christopherboots.com

03/ Sarah Lustre velvet cushion. cocorepublic.com.au

04/ Yellow Ellen dining chair. essentialhome.eu

05/ Faux spear grass plant. dowsingandreynolds.com

06/ Bella coffee table. hayshop.com.au

07/ Koa ceramic vase. cocorepublic.com.au

